



# Integrated flood risk management in Sweden - How to achieve it?

A consultants view...Urban experiences, green infrastructure and socioeconomic analysis of flooding, experiences from UK

Seminar 12th of November  
Swedish Water House

Anna Dahlman Petri, director at WSP  
[anna.dahlman.petri@wspgroup.se](mailto:anna.dahlman.petri@wspgroup.se)

A woman with dark hair, wearing a grey jacket, is looking up and smiling, gazing towards a city skyline at night. The skyline features several tall, brightly lit skyscrapers, with the most prominent one having a distinctive curved, glass facade. The city lights create a bokeh effect in the background.

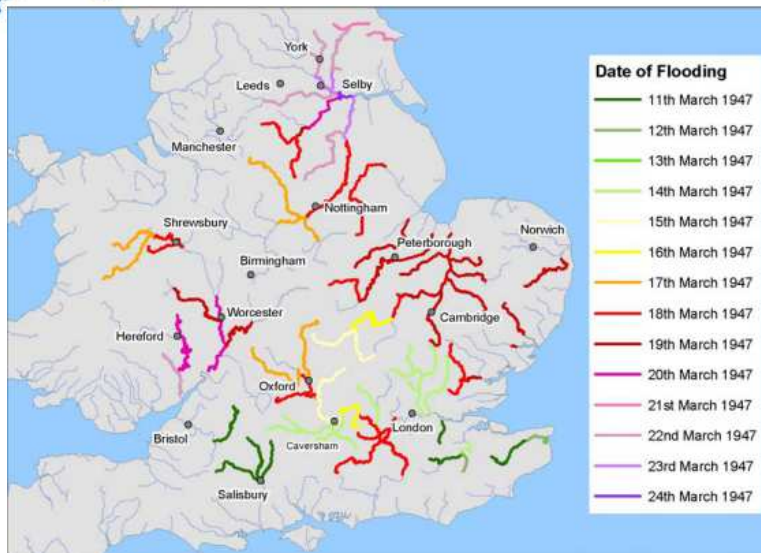
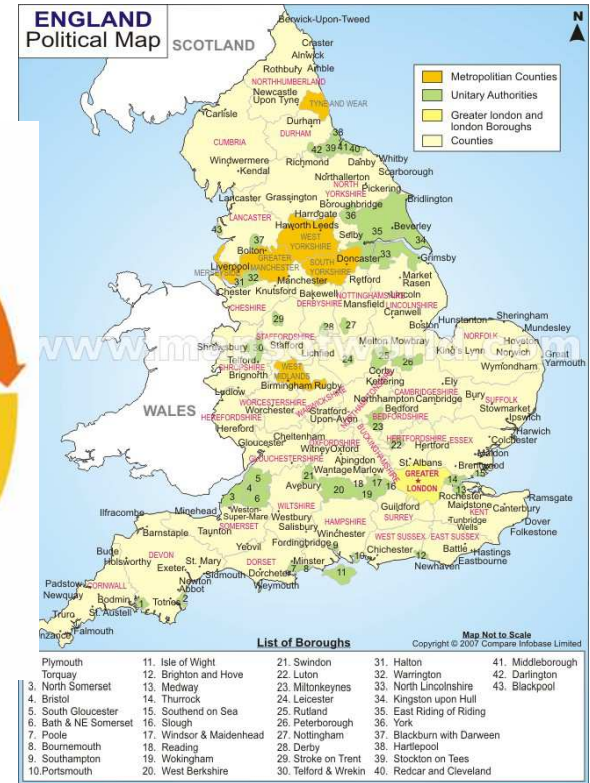
# DESIGNING FUTURE CITIES

SUSTAINABLE | ATTRACTIVE | COMPETITIVE

UNITED  
BY OUR  
DIFFERENCE







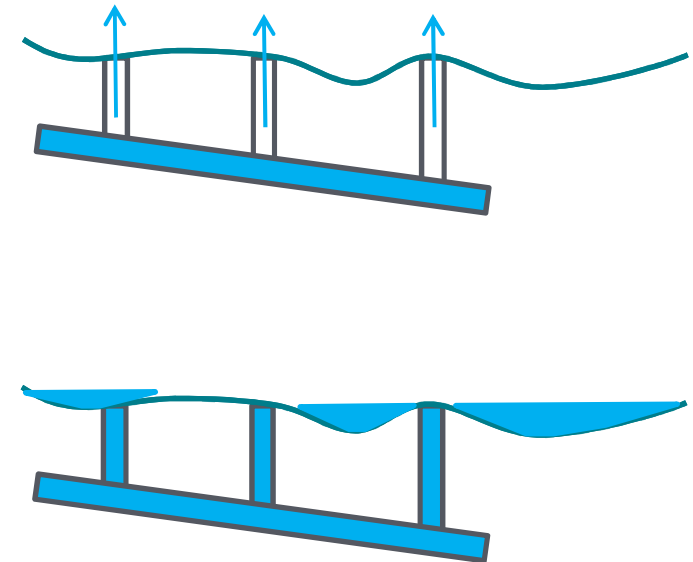
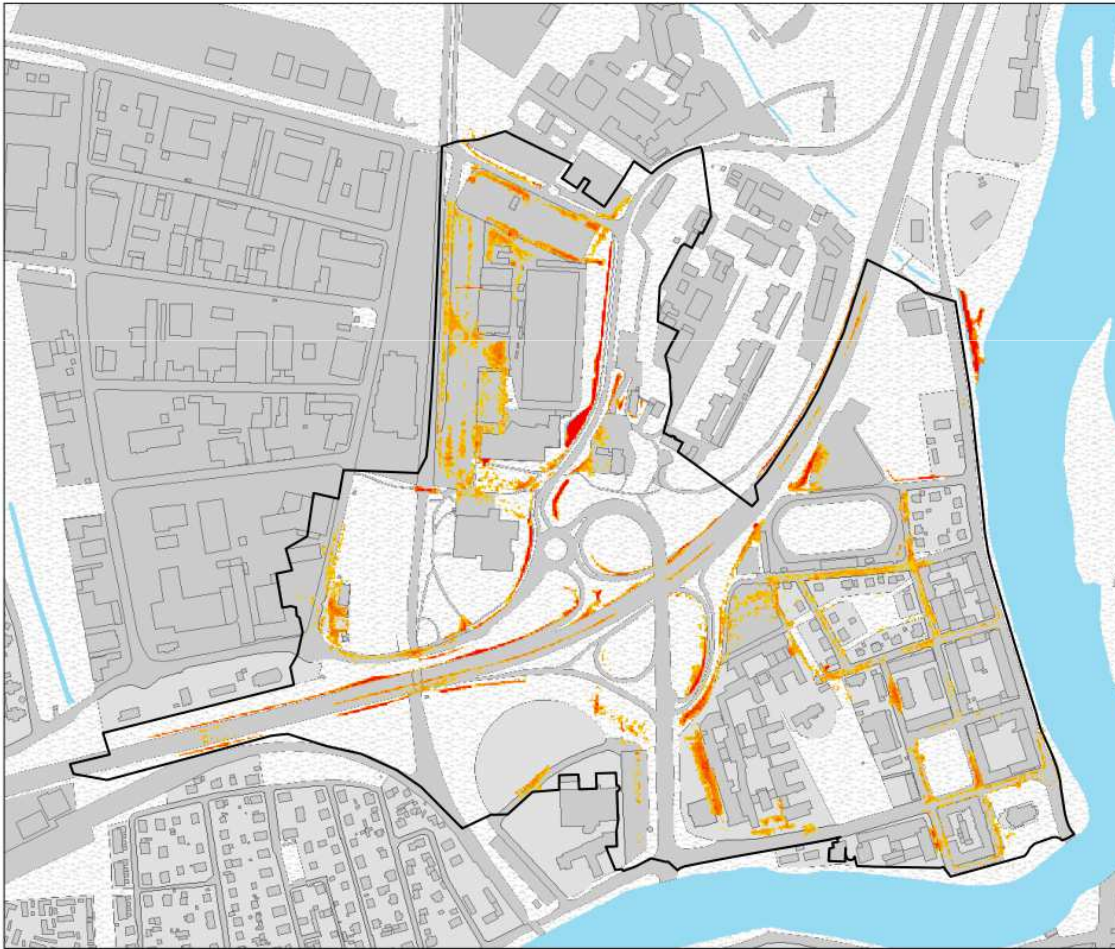






# Flooding risk in urban areas

Combined study of networks and surface runoff  
before development of new constructions in  
Karlstad



# Personal reflections

Swedish water service law – constrains in terms of cost-effective storm water solutions in a changed environment

Affordability

Insurance issues



# We must....



- Value water
- Make room for water in the physical environment
- Policy to overcome obstacles in the regulation
- More collaboration over the administrative borders
- We can afford more

# What's the problem?



- Lack of brave decision makers with a long-term perspective (over the mandate period)
- Not valuing the water resource when opposite interest
- No clear responsible part over the administrative borders





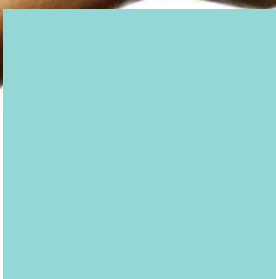
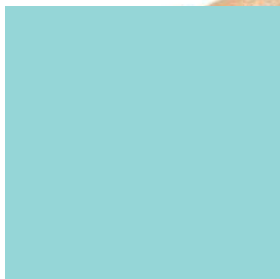
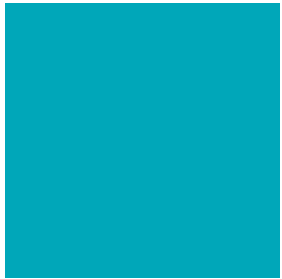
Reflections  
Where is my magic wand?

## Ideas of how?



- State liquidity fund
- Clear requirement in different stakeholders responsibility in implementing the EU directives- follow Swedish law
- Make compulsory to take make Surface Water Management Plans in order to mitigate risk and damages- an amendment to existing plans





Be  
brave!

Thank you

