

SLU utvecklar kunskapen om de biologiska naturresurserna och människans förvaltning och hållbara nyttjande av dessa.

Detta sker genom utbildning, forskning och miljöanalys i samverkan med det omgivande samhället.

Vision: SLU är ett universitet i världsklass inom livs- och miljövetenskaper.

Staffan Lund

Grants Office



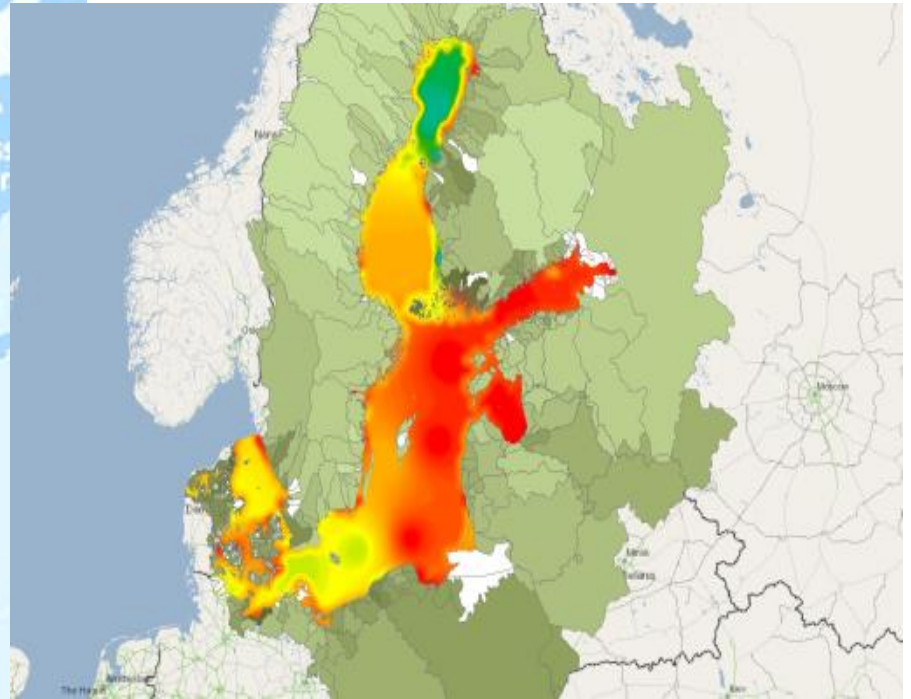


**Vattenvolymen i Östersjön
= 2 x simbassänger/Östersjöinvånare**



Foto: Holger Ellgaard/Wikimedia Commons

*8 times more people per km³
of marine water compared
to global averages*



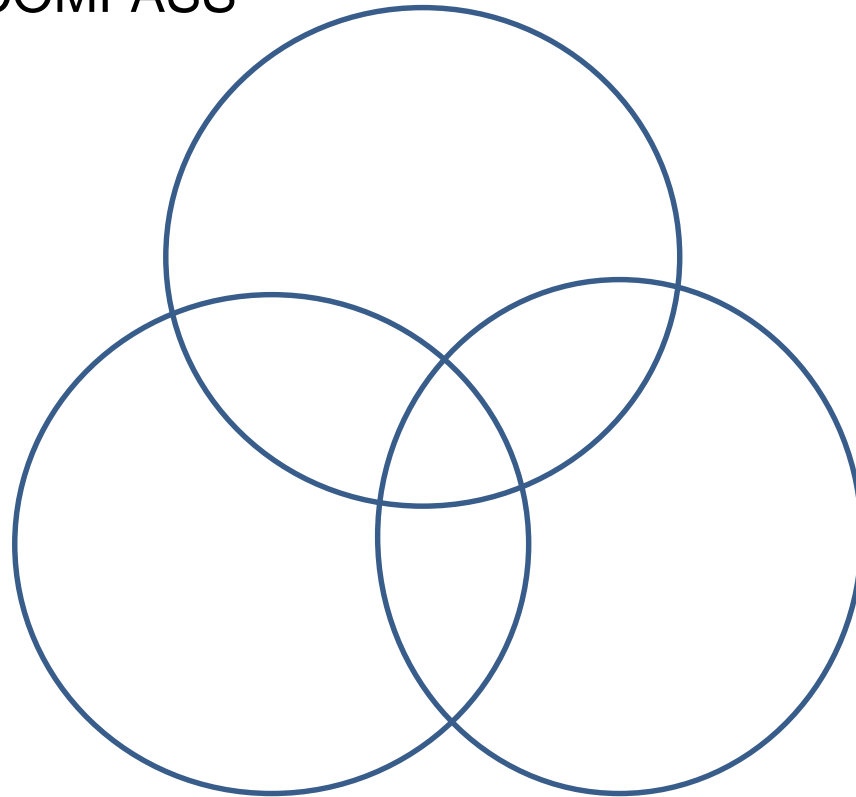
EU Baltic Sea Region Programme 2007-2013

- Baltic Compass
- Baltic Deal
- Baltic Manure

20 million EUR in project financing for
agriculture and environment

Baltic Compass, Baltic Deal and Baltic manure

Policy adaptation and stakeholder dialogue,
COMPASS



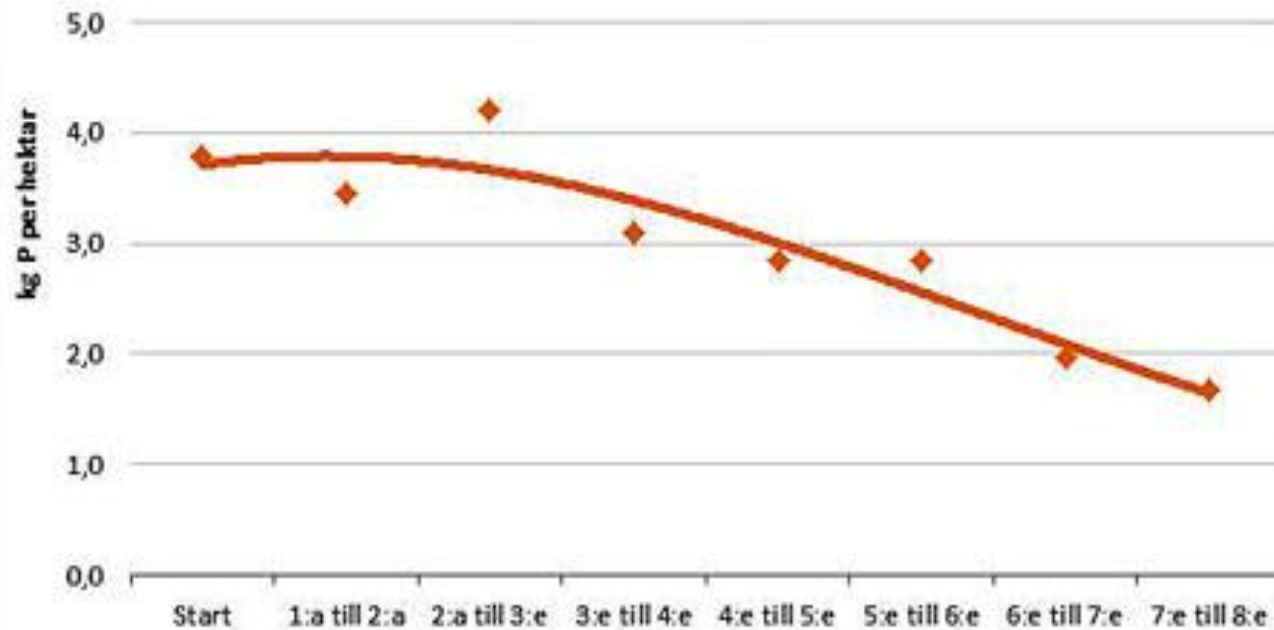
Innovations and
investments,
MANURE

Best practices
and farm advise,
DEAL

Learning from the projects....

- Financial mechanisms for international cooperation is essential and cost-effective.
- Investments, policy dialogues and innovations form a good project cocktail.
- Still strong sectororientation while we need more of community based system approaches.
- Important to discuss multiple ecosystem gains to complement the pure nutrient discussion.
- The whole issue of setting environmental targets on local levels remains to be solved.

Fosforöverskott på 89 mjölkgårdar 2001-2014

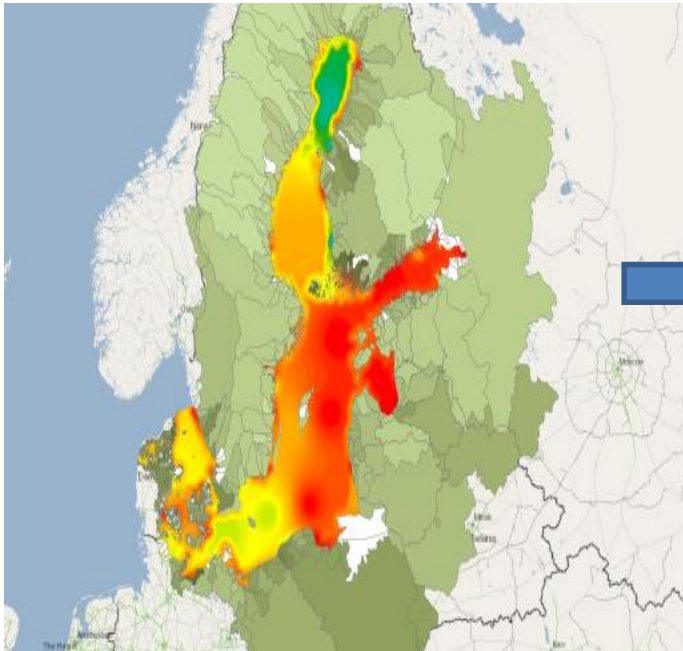


Mätningar av fosforöverskott på 89 mjölkgårdar över i genomsnitt 8,5 år.
På samtliga gårdar har 8 beräkningar genomförts.

Efter greppa näringen, 20150922

Where do we find the most effective solutions

Along the road from sector orientation to community based approaches?



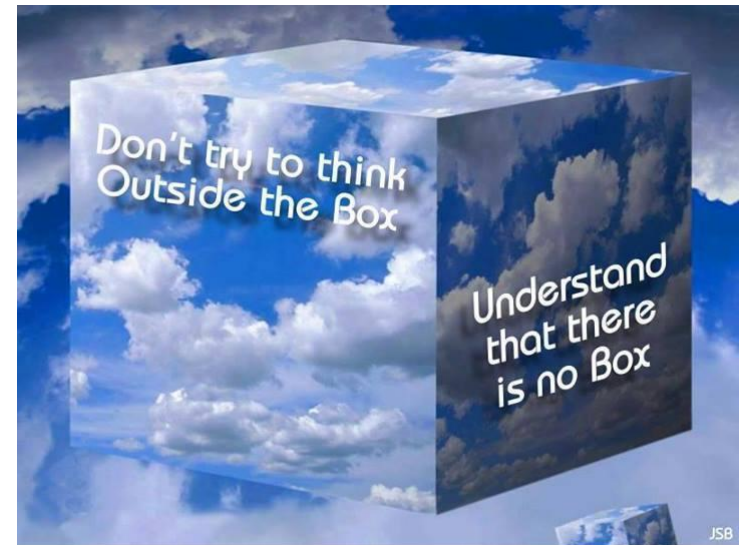
What do we mean by community based approaches - do we have a better concept?

INSTEAD
of thinking
OUTSIDE THE BOX,

**GET RID OF
THE BOX.**

-DEEPAK CHOPRA

DIAMONDINTHEROUGH.COM



PICTUREQUOTES.COM

JSB



Eutrophication - a resource for LIFE



Greener Agriculture for a Bluer Sea,
GABBS

Stralsund, Gemany, 5-6 November

Strategic
partnerships



Political
commitment

"Agricultural Production and Consumption"